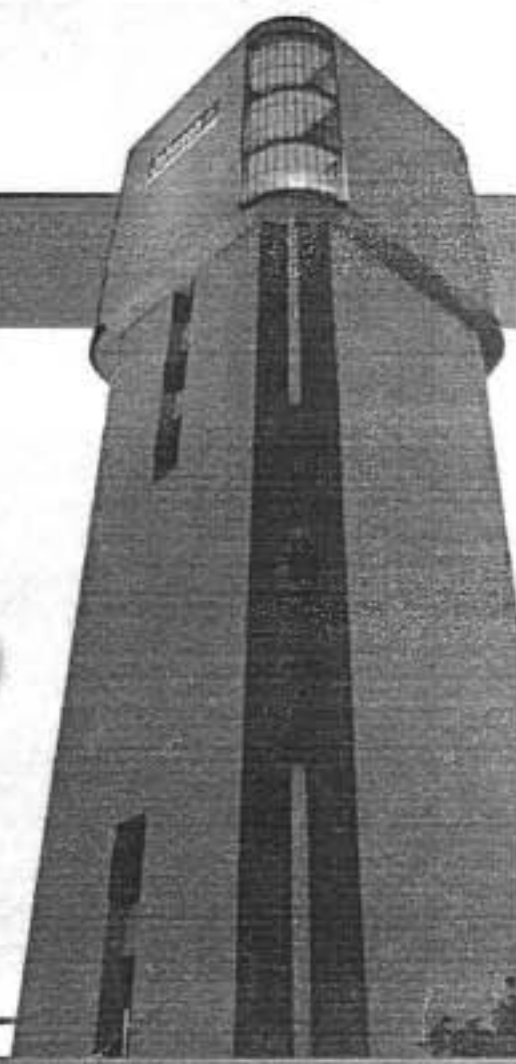
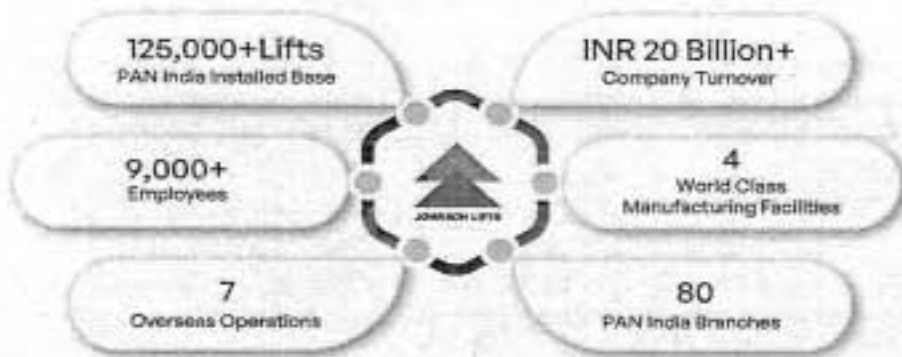


JOHNSON LIFTS PRIVATE LIMITED

Perfecting the Art of Vertical Mobility

ESTABLISHED IN THE YEAR 1963



Johnson Lifts' Installed Base PAN India

 HOTELS 2500+ LIFTS	 HOSPITALS 3000+ LIFTS	 AIRPORTS 450+ LIFTS 350+ ESCALATORS	 METROS & RAILWAYS 2200+ LIFTS 3340+ ESCALATORS
 RESIDENTIAL BUILDINGS 80,000+ LIFTS	 COMMERCIAL BUILDINGS 8,000+ LIFTS	 MALLS 200+ LIFTS 3500+ ESCALATORS	 GOVERNMENT PROJECTS 10,000+ LIFTS

Annual Manufacturing Capacity of over 16000 Lifts and 1000 Escalators

TECHNICAL SPECIFICATION :-A00

I PRODUCT DETAILS	
Building Type	Schools/Colleges
Product Name	MINI SUKRANTI - LR
Number of Units	1
Lift Designation	-
Lift Type	Passenger Lift
Rated Capacity Persons / Kgs	4 Persons / 272 Kgs
Rated Speed m/s	0.66
Number of stops / openings	3 / 3
Floor Designation	GROUND + 2 UPPER FLOORS
Access Sides Inline/Thru Type	1 (One), In Front Only
Floor Display Character (Entrance Position)	0 (F),1 (F),2 (F)
II MACHINE AND CONTROLLER DETAILS	
Machine Location / Type	Machine Roomless - Gearless
Drive System	Micro Processor Based VVVF
Control system	Microprocessor Based Simplex Selective Collective Control
Main Power Supply	AC 3 Phase, 50 Cycles, 415 Volts ±10%
Light Power Supply	220 Volts 50Hz LNE
III SHAFT DETAILS	
Shaft Type	RCCRB - Reinforced Cement Concrete With Red Brick
Shaft Width mm X Shaft Depth mm	1300 X 1350
Overhead mm	4000
Pit Depth mm	1350
Travel Height (in Meters)	7
Shaft Reduction Channel	Not Required
Shaft Reduction Channel Weight (in Kgs)	No
Pit Ladder	Yes
IV CABIN DETAILS	
A) SIZES	
Car Width mm X Car Depth mm	800 X 950
Car Clear Height mm	2100
Car Door Type Center/Side	Power Operated Side Opening Sliding Door
No Of Door Panels	2 Panel
Type of Door Drive	Linear Door Drive System
Car Door (W X H) mm	700 X 2000
B) FINISHES - *SUBJECT TO AVAILABILITY	
Design Of Lift Cabin*	Decorative Laminated Steel Sheet (DLSS)

For M/s. Johnson Lifts Pvt. Ltd.

Customer acceptance
(Seal & Date)

Page 2 of 17

Authorized Signatory

TECHNICAL SPECIFICATION :- A00

Lift Cabin Finish*	Wood N Metal - Teak
Car Door*	Decorative Laminated Steel Sheet (DLSS)
Car Door Finish*	Teak
Ceiling Finish*	Hairline Finish
Ceiling Type	Standard JLFC06
Ceiling Light	Led Lights
Fan	Cross Flow - Fan
Flooring Type	Pergo - Wooden-JLFL 03
Handrail Type	Ss Round Handrail JLHR01
Handrail Location	Rear Side
Car Door Sill	Aluminum
V LANDING DOORS DETAILS	
A) SIZES	
Door Type	Side Opening Sliding Door
Door Size (W x H) mm	700 X 2000
Door Sill	Aluminum
B) FINISHES	
Landing Door Finish*	1-3-Decorative Laminated Steel Sheet (DLSS) - Teak
Landing Door Frame / Finish*	1-3-Decorative Laminated Steel Sheet (DLSS) - Teak
Main Landing Floor	0
Other Landing Floors	1,2
Jamb Type	Slim Frame
VI SIGNALIZATION / FIXTURES DETAILS	
A) CABIN OPERATING PANEL	
Car Operating Panel Type	Car Operating Panel - JLCP01
Number of Car Operating Panel	1
COP Faceplate Finish	Stainless Steel - Hairline Finish
Button Model	1s15 - Ea1102(Bas11c) Flat Marking Milk White Character Glow Red Braille (Square)
Car Display	Digital Display (7 Segment) -Vertical
Car Display Location	Car Operating Panel
Call Register Signal	Yes
B) LANDINGS INDICATORS	
Landing Operating Panel Type	Landing Operating Panel - JLPL (Jsm211) / JLLP02
LOP Location	Landing Display On Wall
LOP Mounting Type	Surface/Wall Mountable

Customer acceptance
(Seal & Date)

Page 3 of 17

For M/s. Johnson Lifts Pvt. Ltd.

Authorized Signatory

TECHNICAL SPECIFICATION :- A00

LOP Faceplate Material	Stainless Steel - Hairline Finish
Landing Display	1-3-7SD-V
Landing Display Location	1-3-LOP
Call Register Signal	Yes
Stainless Steel Braille Button	Yes
VII SAFETY DETAILS	
Over Speed Governor	Yes
Door Protection	Infra Red Door Screen
Counterweight Screen	Inbuilt
Over Load Indicator	Yes
Automatic Rescue Device	Yes
Battery Operated Emg Alarm Light	Yes
Two Way Intercom with Press & Speak in COP	Yes

Customer acceptance
(Seal & Date)

Page 4 of 17

For M/s. Johnson Lifts Pvt. Ltd.

Authorized Signatory